



**Naval Design&Consulting s.r.l.**

2013

# Mission

---

The supply of high-level technical services for pleasure yachts and workboats of steel, light alloy, composites and wood, including all design related activities, classification and shipyard assistance guaranteeing the respect of strict time scheduling.

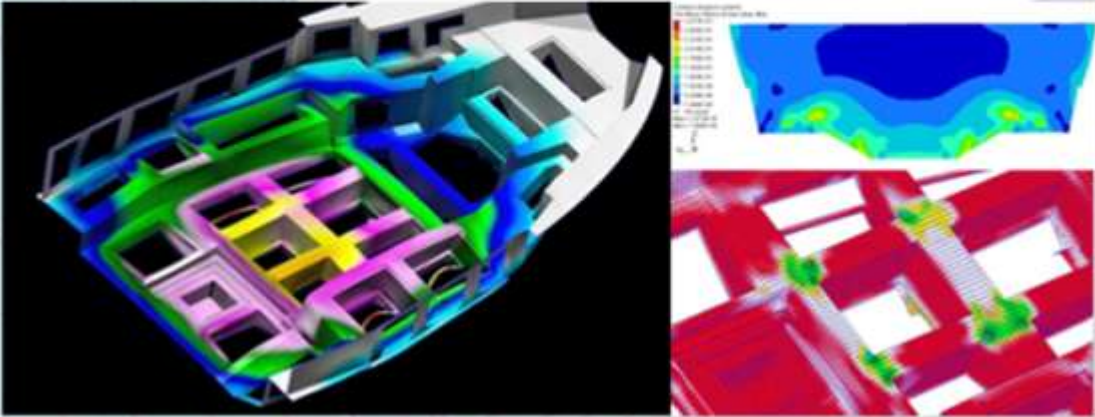
# Philosophy

---

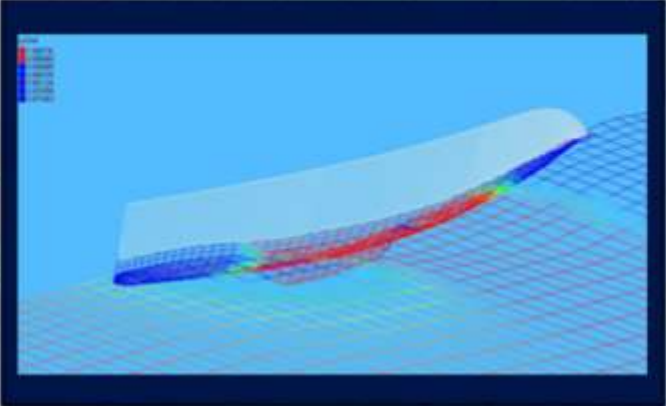
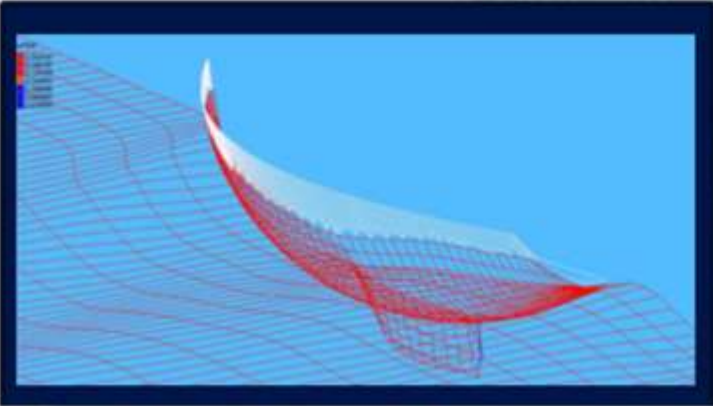
Our projects take care of aesthetical issues interfaced with all the aspects of naval design, from hull optimization to structural and systems integration, from safety to comfort on board.

# Research and Development

Research is always part of our consultancy service. Each commitment is a new deal, based on previous experiences, finalized to gain the best results in terms of customer satisfaction.



Finite Element Analysis for composite hull



U/UREF-CFD Simulation of Sailing Boat Hull



Tank Tests With Experimental Hull



# Services

- Surveying
- Structural Calculation
- Naval Architecturing
- Project Management
- Finite Element Analysis
- Interior and Exterior Design
- Computational Fluid Dynamics
- Certification and Classification Assistance

# Products

- Night Vision
- CAD-CAM Software
- Gyrostabilisers
- Helicopters and Microlights



# Pleasure Crafts

---





High Speed Project 400 RIB max speed: 60-75knot



High Speed Project 400 max speed: 65-80knot





# Atlantis

Verve 36



Design and Engineering



# Verve 40





# Atlantis

Verve 32





# Wake 46



Millennium Yacht Design  
Award Winner 2008



NAVAL DESIGN & CONSULTING



Wake 66



Conam Widebody 65

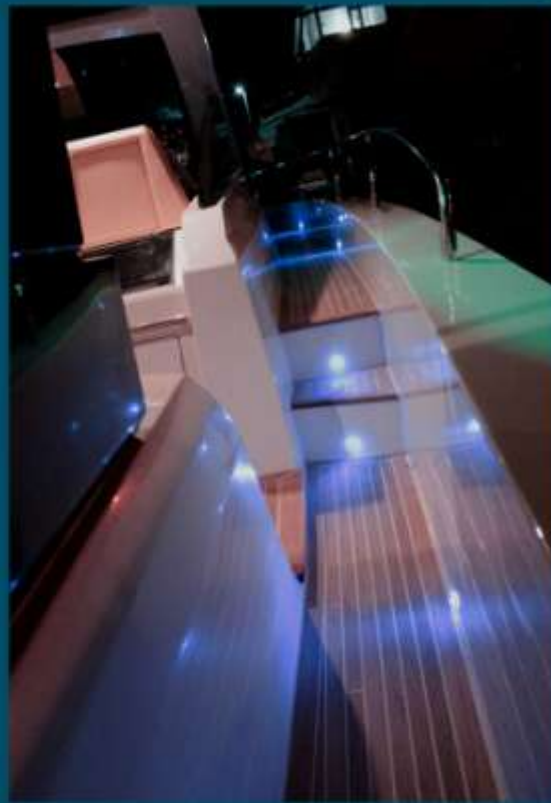
Conam 80 Sport



NAVALDESIGN&CONSULTING



# Wake 40





# Enjoy Boat Orca 38

---





# House Boat



Diamond Yachts S43



XL Marine 65



Trident 50



Alg 78





# Gagliotta 52





# GallartBrava 15





# XL Marine 45

---



# XL Marine 51

---



# XL Marine 51 Ht

---





# XL Marine 60

---



# Ribs

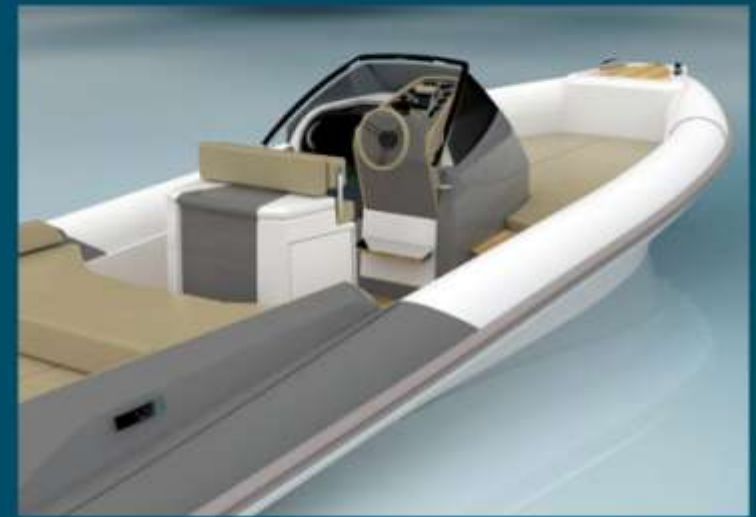
---





# Rigid Inflatable Boats

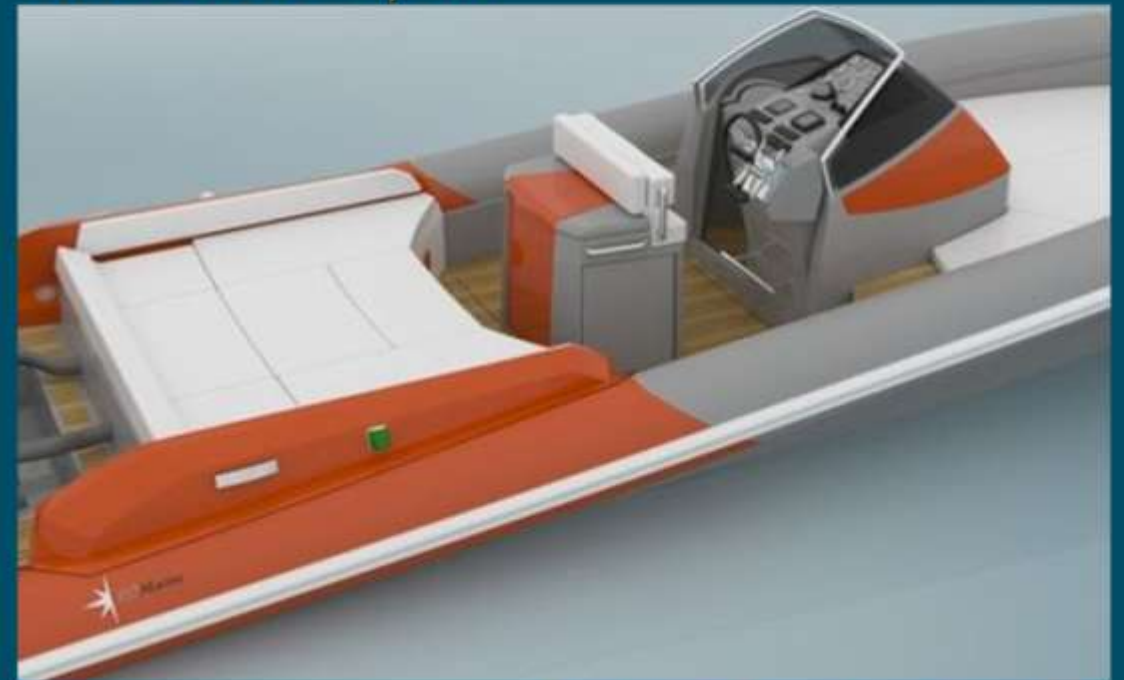
RIB 25



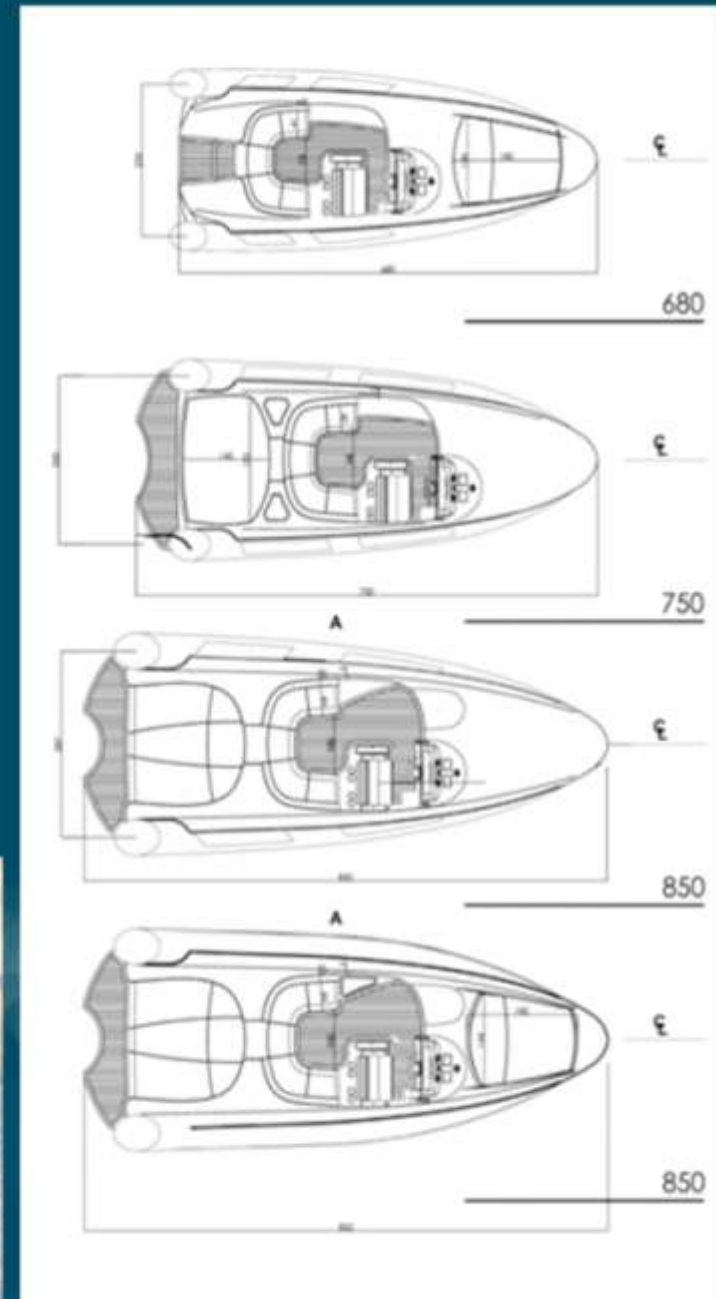
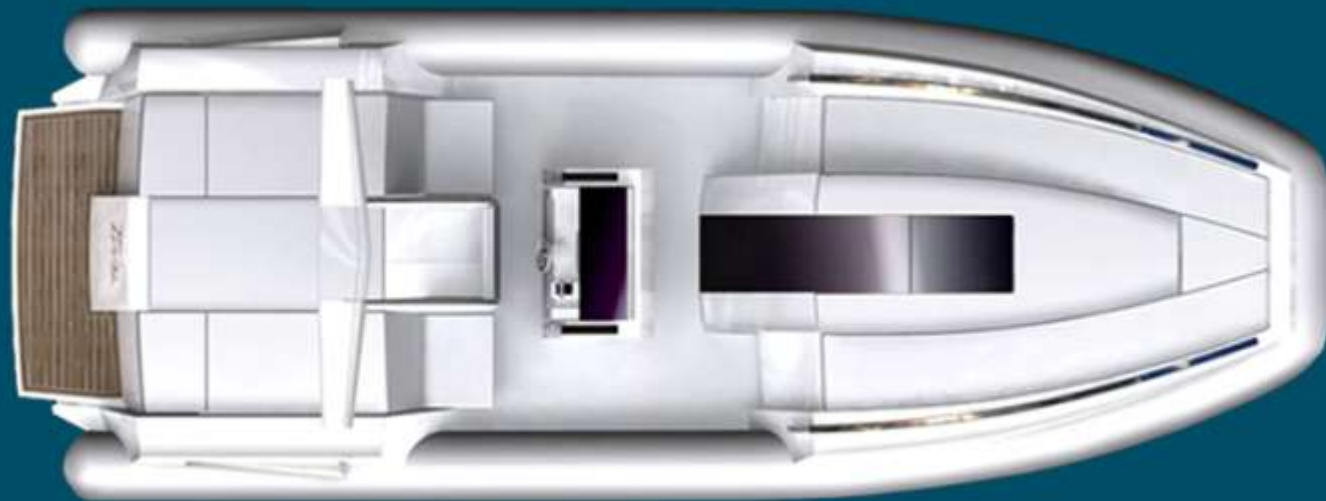
RIB 28.5 Cabin



RIB 28.5 Open



# Rigid Inflatable Boats





# High Performance Fishing Boats

OBP S35



Victory Team47-Dubai



# Work Boats

---





# Wayachts Patrol Boats

Fast Support Vessel 50m



WA4000



WA2000



Wayachts

Patrol Boats

WA1250



Pilot Boat



Fight Boat





# Impec750 America's Cup



# Classic Designs

---



---

NAVALDESIGN&CONSULTING



# Sparviero40

---



Kingbay450-China



Gozzo 880



Kingbay550-China





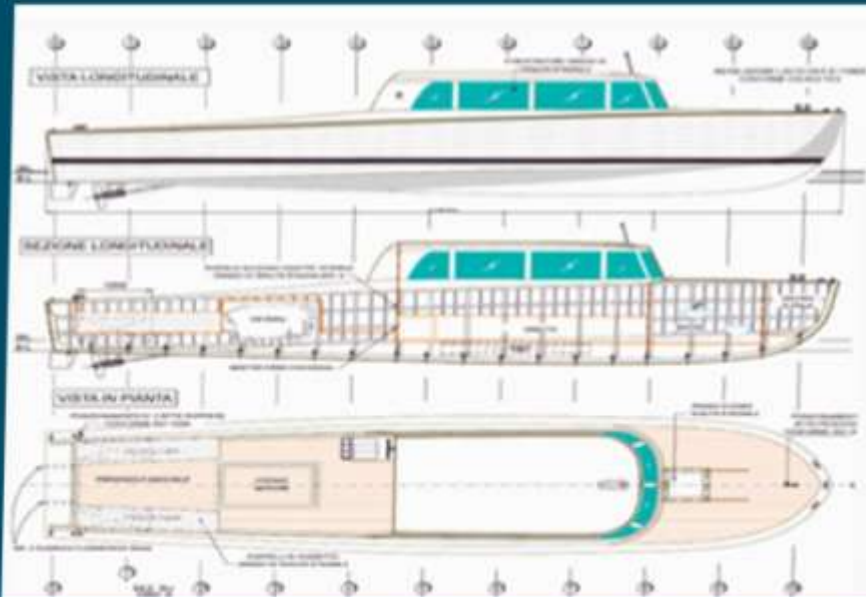
Runabout 7.5



Ieranto 11



Classic Water Taxi 10m



# Teresida 40

---





# Super Yachts

---



# Breathless 200' Catamaran





# M/N Santa Lucia



Ponte Comando



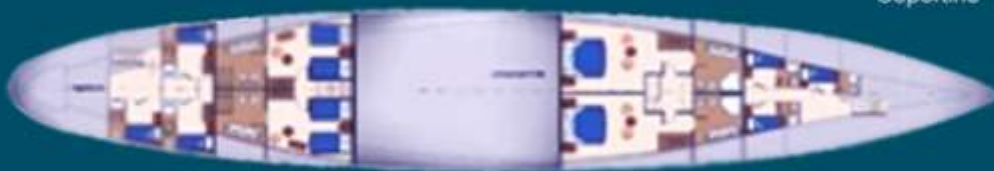
Ponte Armatore



Ponte Coperta



Copertino Inf.



# M/Y Sensei



# M/Y 50m



I-Yacht 24m



I-Yacht 32m



I-Yacht 55m



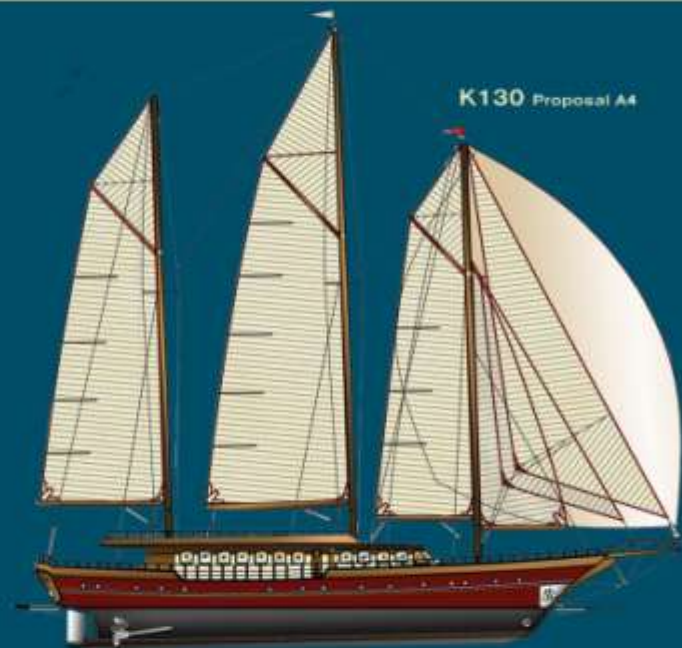


# Crescent

K130 Proposal A1



K130 Proposal A4



# Sailboats

---





# Sailing Catamaran

Light Alloy Construction

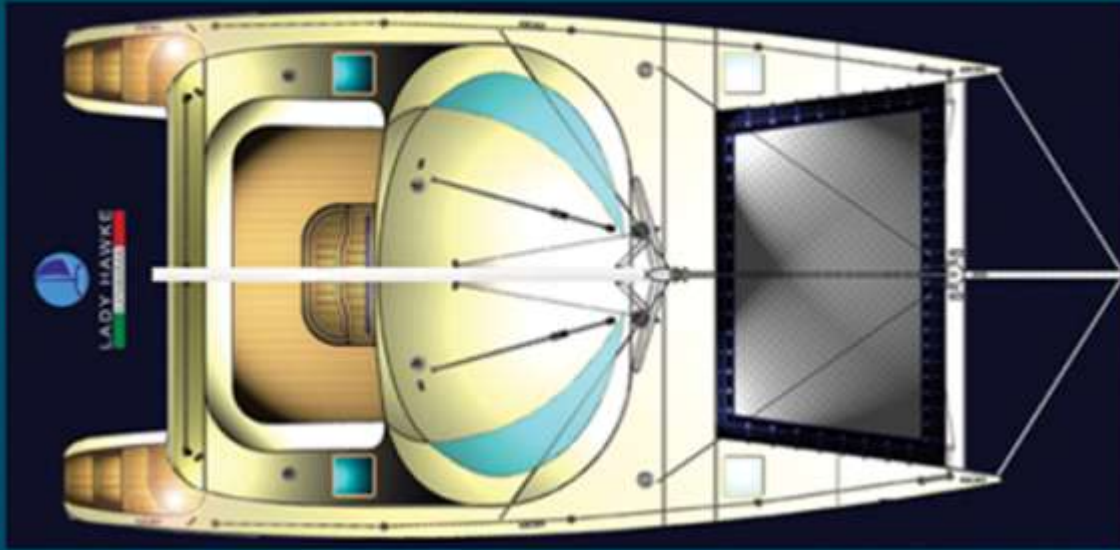


Millenium Yacht Design  
Award Winner 2008

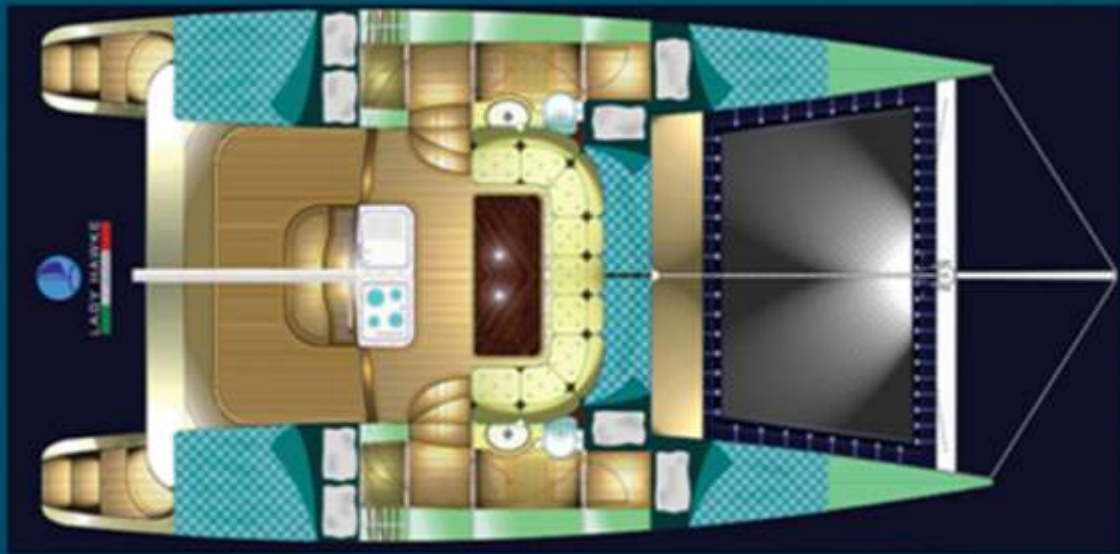


# Sailing Catamaran

Fiberglass Construction

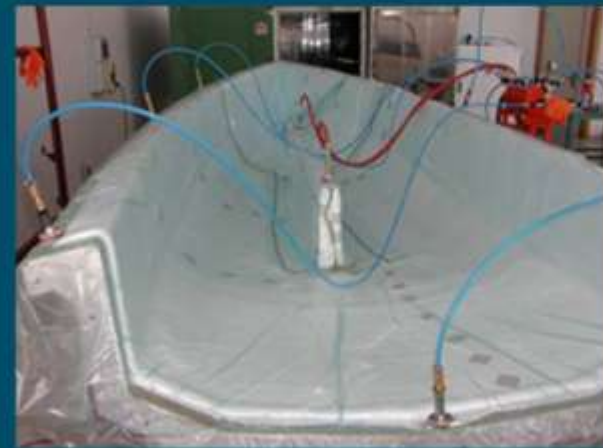
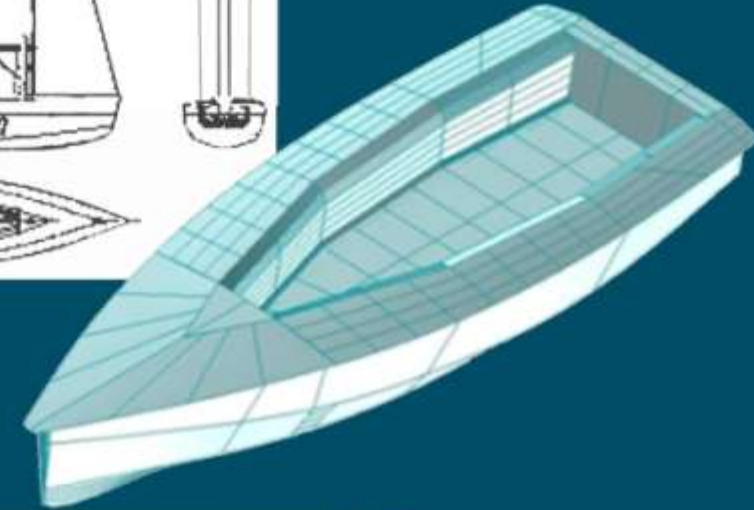


Lady Hawke Cat



NAVALDESIGN&CONSULTING

# Drifts Boats





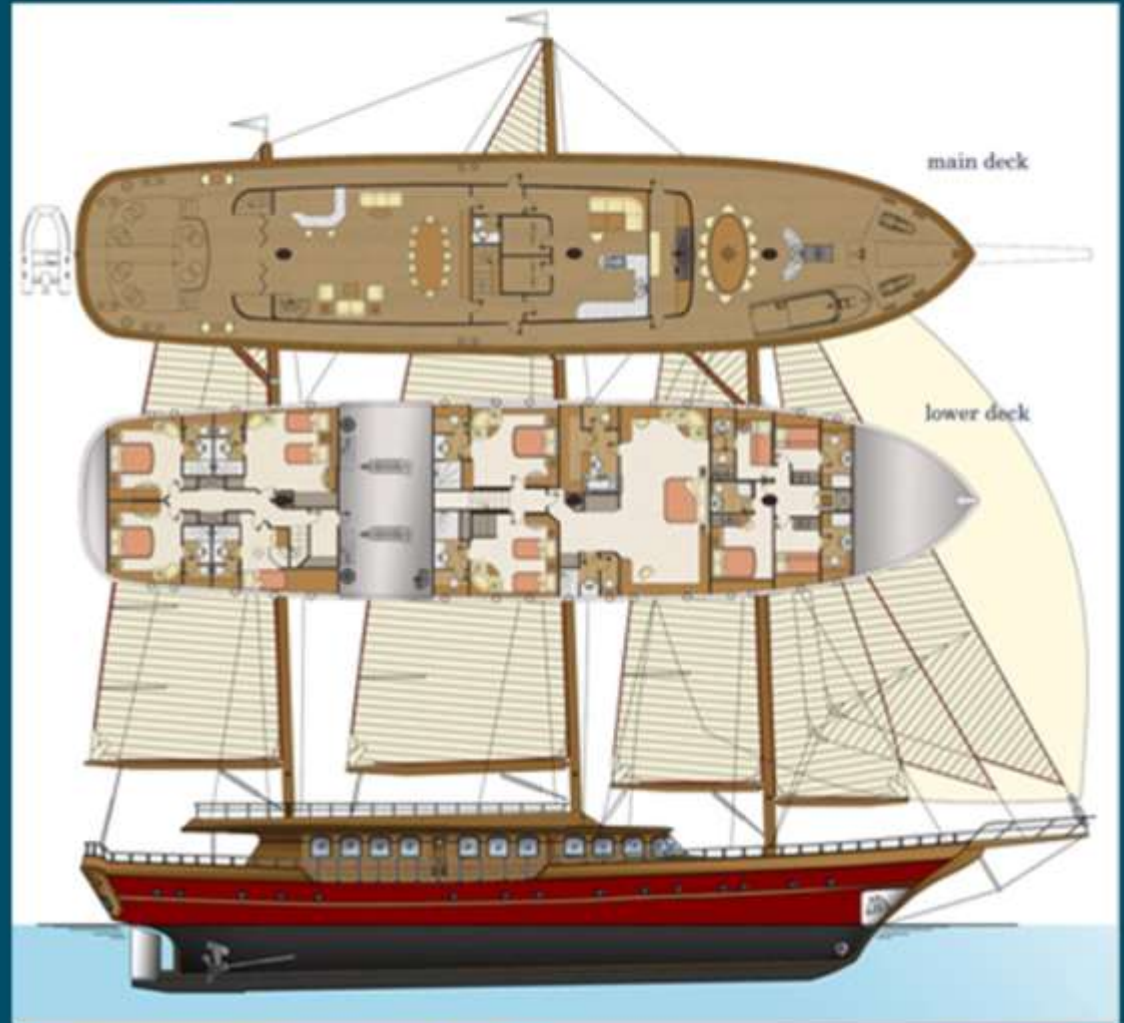
# Wooden Ketch

Turkish Wooden Motor Sailers  
Built in Marmaris by Crescent Marine

Ketch 85'



Ketch 39'



# Passenger Ferry and Workboats

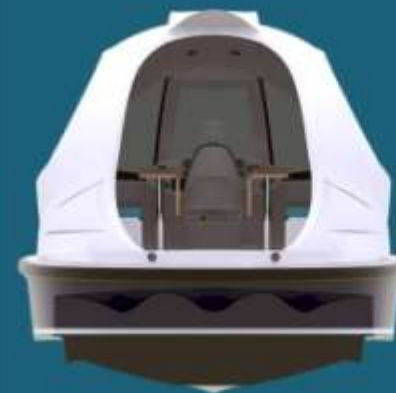
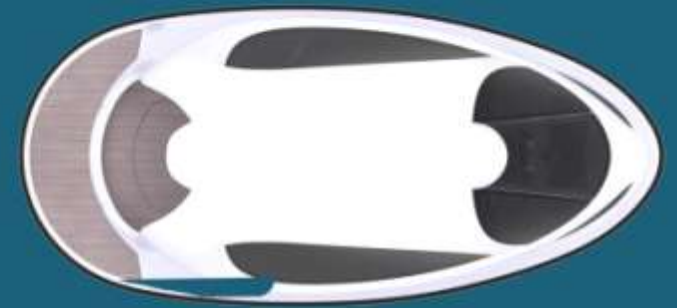
---





# Seajet Capsule

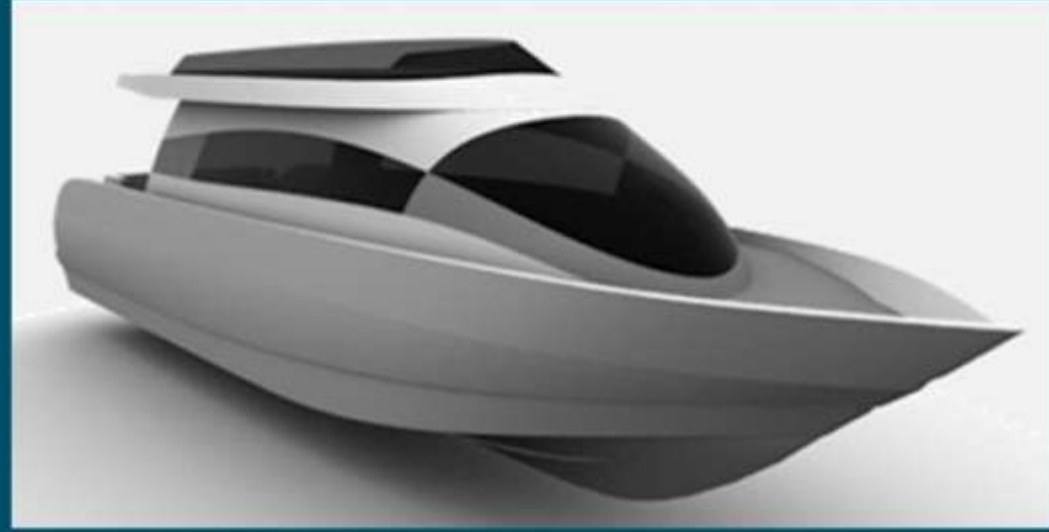
---



Passenger Ferry 200PAX



Water Taxi 30PAX





# HSC Fast Ferry 38m 220PAX



# Teresida 60

---

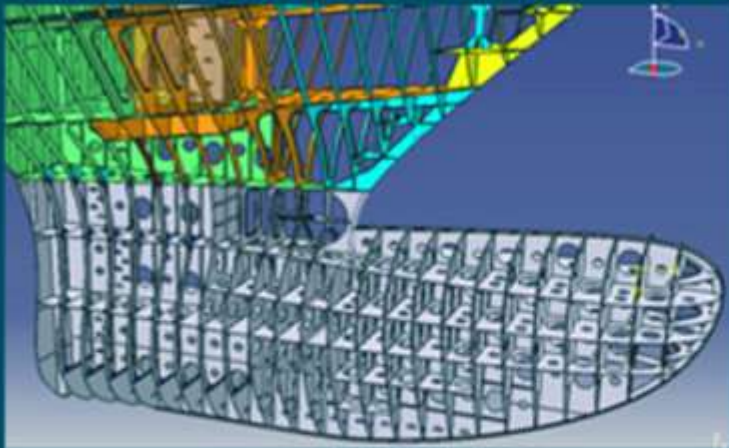




# MSC Cargo Ship Transformations



## Moby Fantasy - Ship Reperation



## M/N Nicole



## M/N Jade

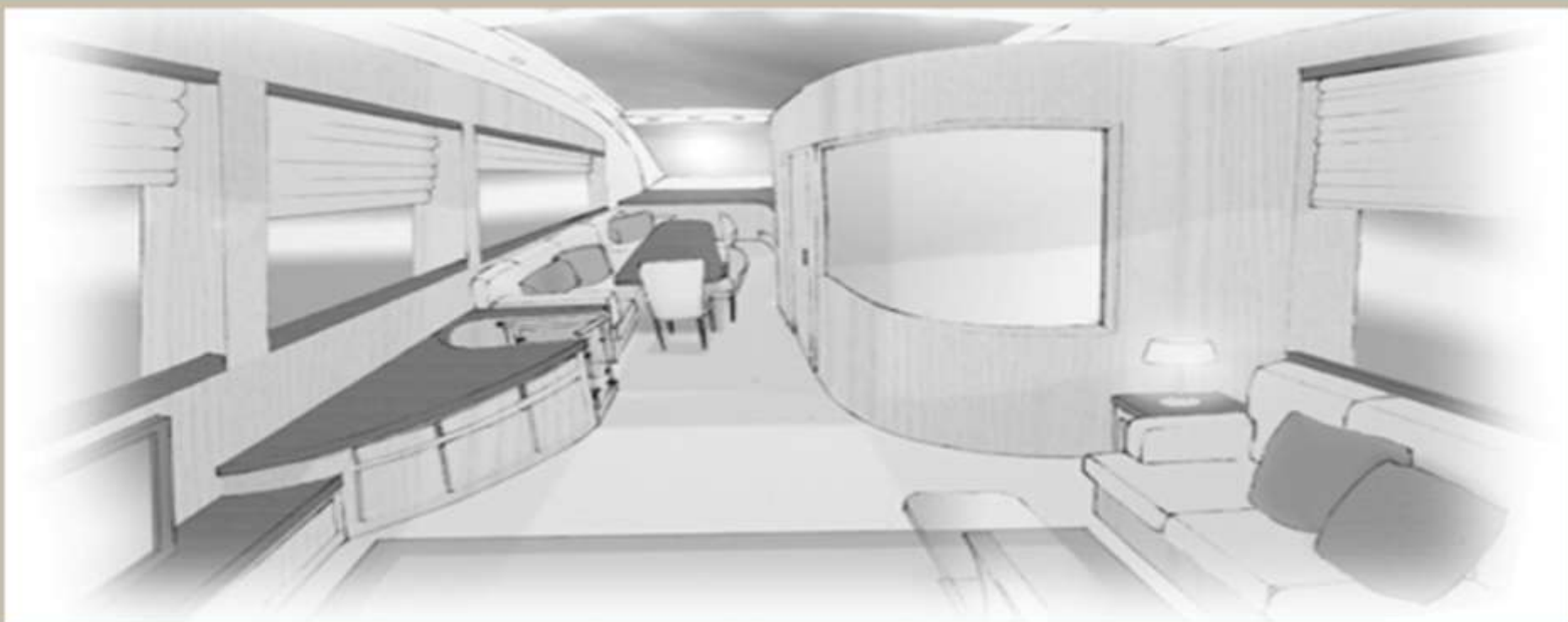


## M/N Laura



# Interior Design

---





Emozione 74

Main Saloon



Emozione 74

Master Cabin



Casolare

Bedroom



House Boat

Main Deck



Casolare

Loggia



# XL Marine 51





# Teresida 40



# Teresida 60



# Atlantis Verve 36

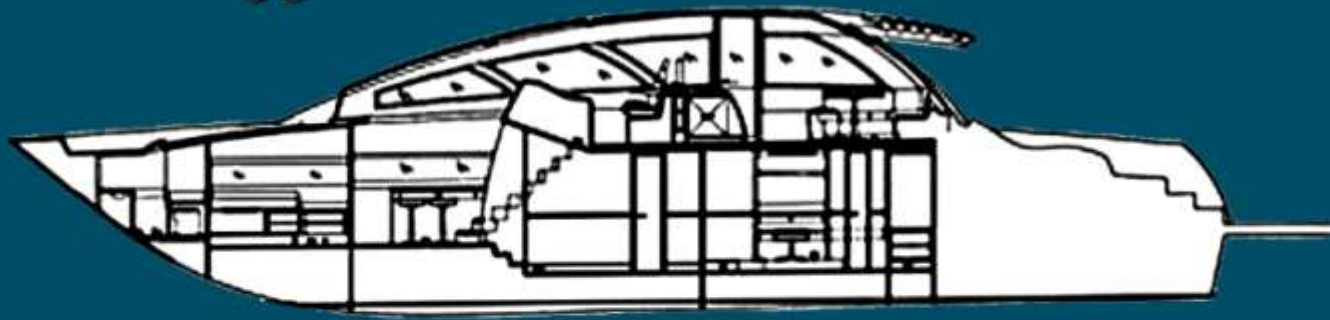


# Wake 40





# Wake 66



# Kingbay 450



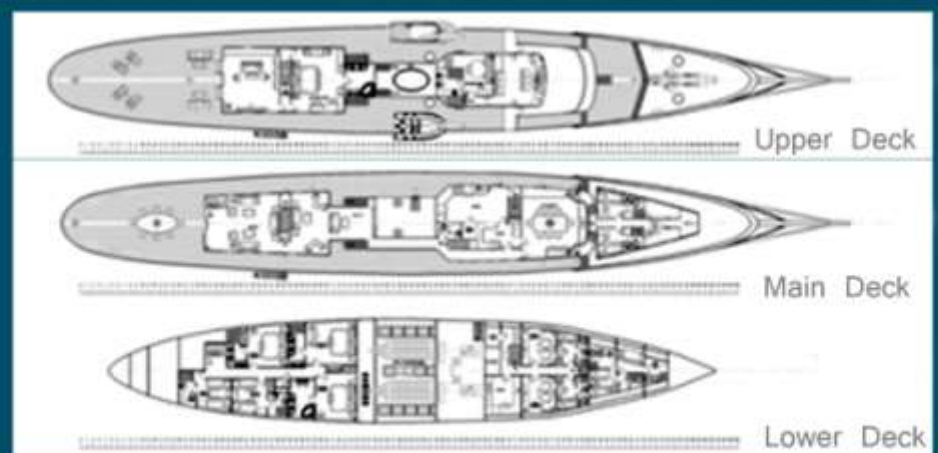
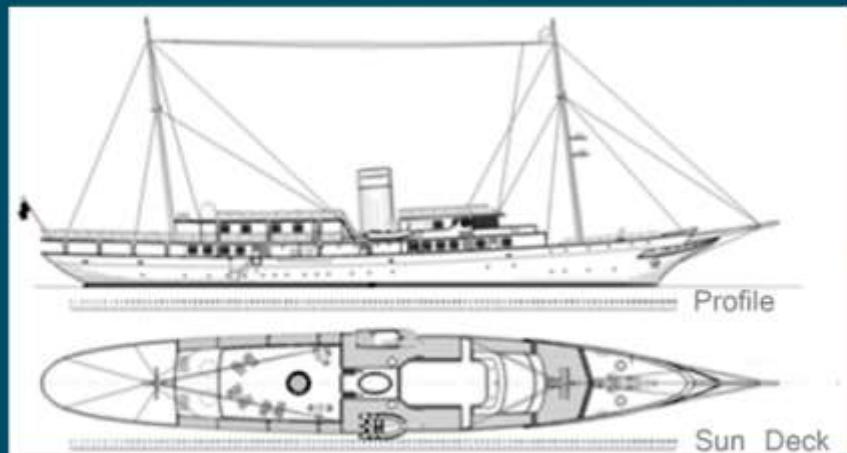
# Refit and Upgrade

---





# M/N Santa Maria 65mt



# Tug Vervece 30mt

# M/Y Sea Flower





# Tug DP Monitor

---

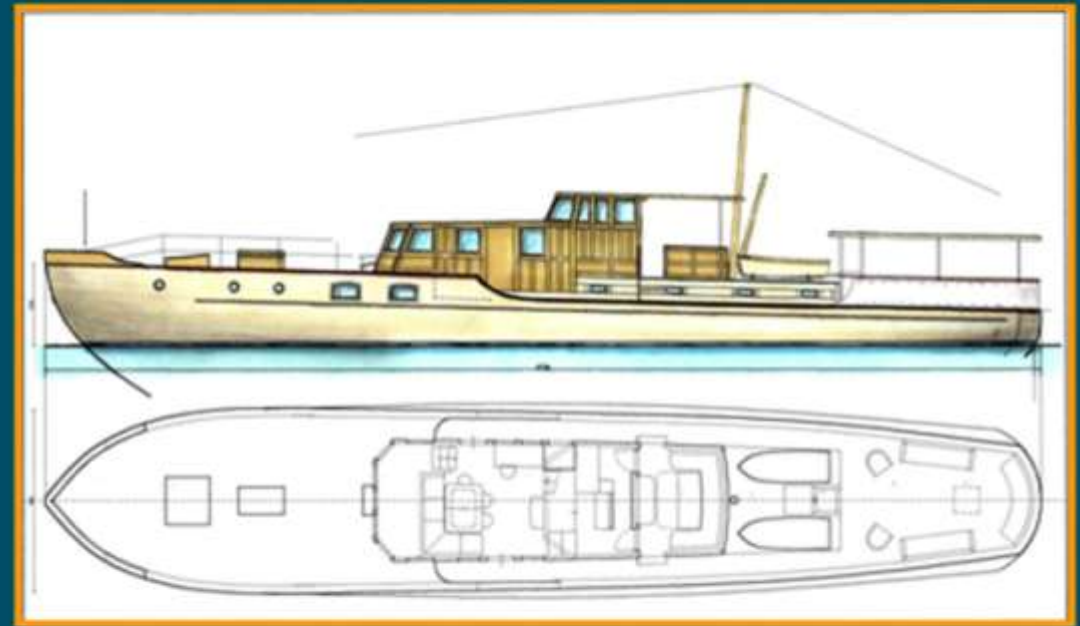




M/Y Pamela



M/Y Meteor



M/Y Ornsay



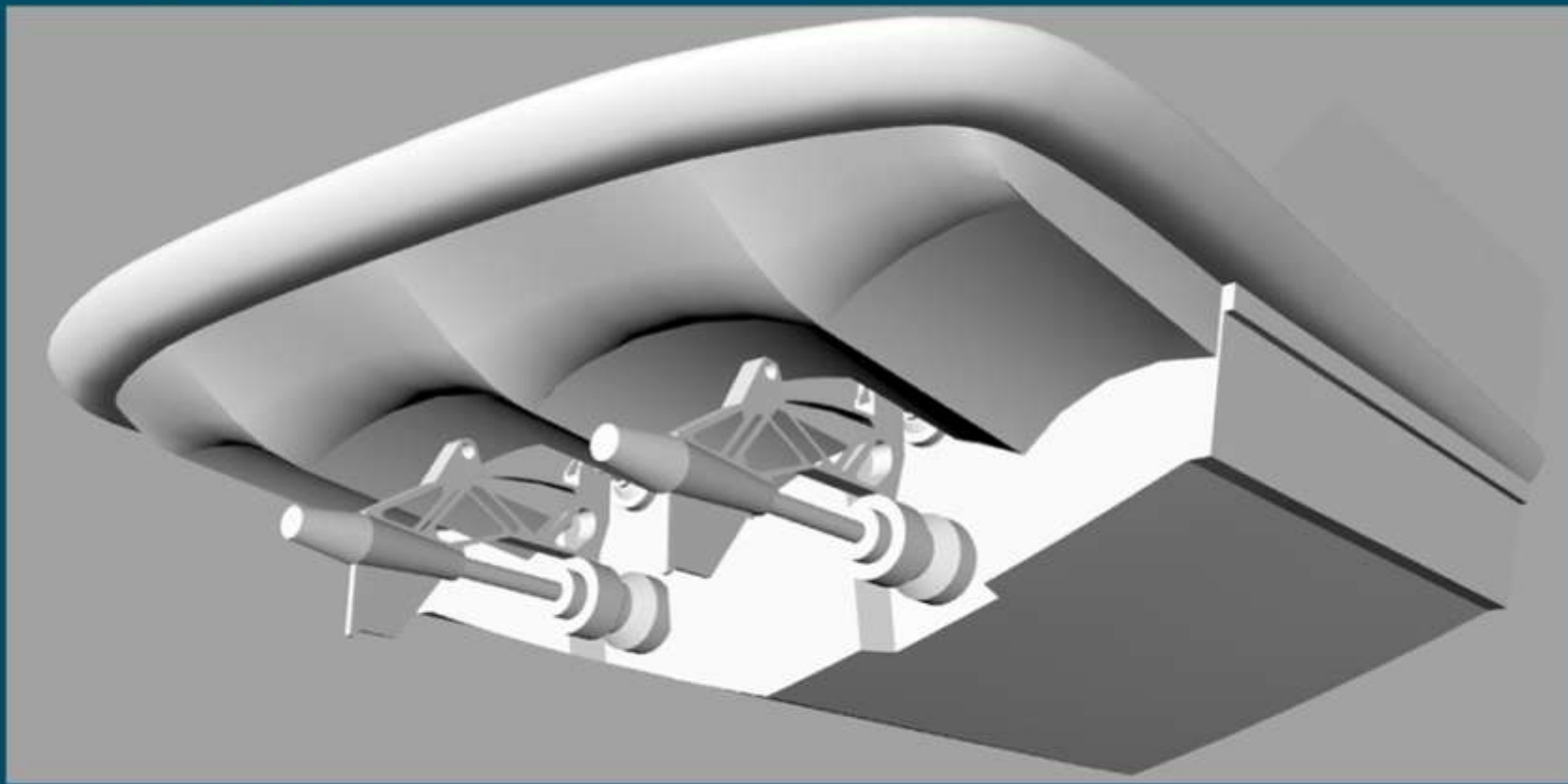


# Magnum 80

---



# Jaguar Fp40

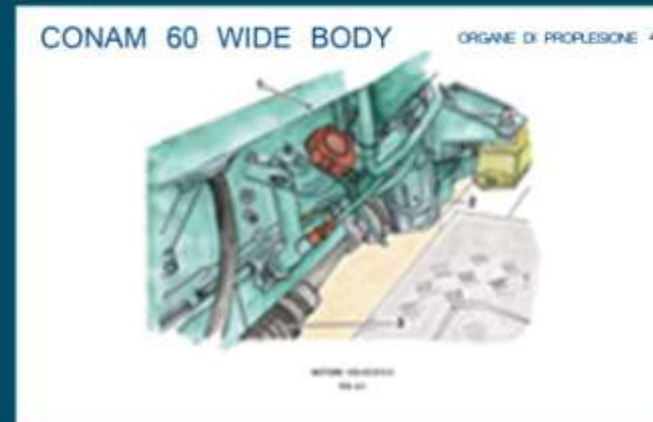
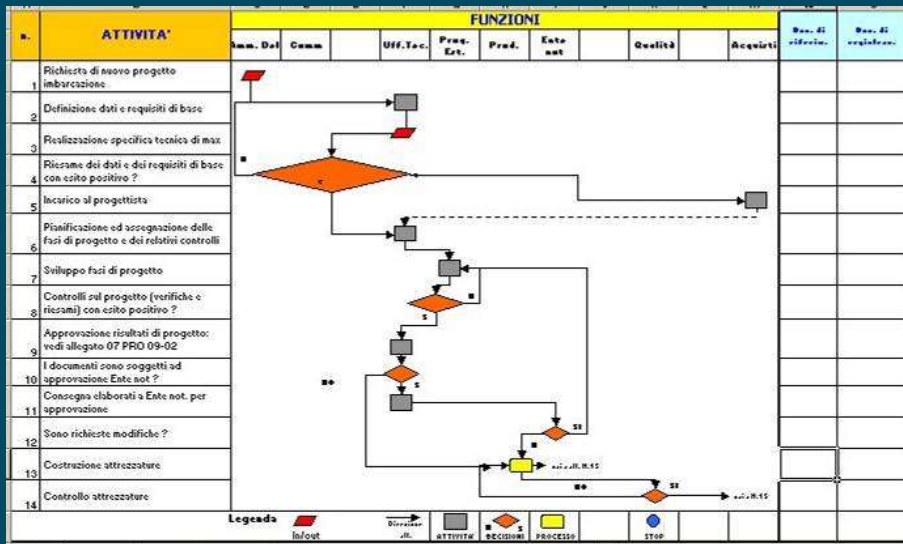




# Project Management Certification Assistance Technical Documentation

Our staff is specialized in shipyards' technical assistance for ships and crafts production, defining time planning and best production procedures and instructions. We define detailed bill of materials choosing accessories, equipment and raw materials even with direct contacts with suppliers. Technical documentation for certification and class requests can be supplied for every kind of vessel and navigation.

codice	nome attività	%	Lavoro	Durata	Foto	
10	portello plancia poppa	0%	45 h	2,91 g*	mar 09/11/06	
11	supporto plancia trinceria	0%	4 h	0,5 g*	lug 13/01/06	
12	cruscotto interno	0%	24 h	3 g*	lug 13/01/06	
13	cedano cucina	0%	5 h	0,83 g*	gio 16/01/06	
14	stampate sicche bagni	0%	30 h	1,88 g*	ven 17/01/06	
15	<b>VITRO</b>					
	▣ VETRORESINA CALDATURE INTERNE	8%	187 h	15,46 g*	mar 15/11/06	
22	CA.8	▣ CARPENTERIA ESTERNA	8%	826 h	75,24 g*	lug 23/10/06
23	CA.18	▣ PREFABBRICATI ALLEGAMENDA	8%	171 h	22,84 g*	lug 23/10/06
31	CA.11	▣ CARPENTERIA ESTERNA VANO MOTORI	8%	97 h	6,28 g*	mar 07/11/06
39	CA.12	▣ CARPENTERIA ESTERNA	8%	151 h	13,88 g*	gio 07/12/06
50	CA.118	▣ CARPENTERIA ESTERNA POZZETTO	8%	164 h	14,25 g*	mar 09/01/07
66	TAPPEZZERIA ESTERNA	0%	3 h	0,38 g	ven 02/02/07	
66	CA.1	▣ CARPENTERIA INTERNA	8%	1.236 h	74,83 g*	lug 23/10/06
67	CA.18	▣ CARPENTERIA INTERNA PREFABBRICATI	8%	219 h	8,38 g*	lug 23/10/06
76	CA.11	▣ CARPENTERIA INTERNA COSTRUZIONE	8%	588 h	29,87 g*	gio 02/11/06
90	CA.12	▣ CARPENTERIA INTERNA MONTAGGIO	8%	813 h	22,61 g*	ven 01/12/06
103	CA.3	TAPPEZZERIA INTERNA	0%	0 h	0 g	ven 02/02/07
104	IMP	▣ MECCANICA	8%	351 h	81,57 g*	lug 23/10/06
105	IMP.8	▣ PREFABBRICATI MECCANICI	8%	88 h	2,25 g*	lug 23/10/06
106		preparazione tubi aria condizionata	0%	12 h	0,75 g*	lug 23/10/06
107		clavetto e raccordiata serb naffa	0%	8 h	0,38 g*	lug 23/10/06
108		supporti pompe di sentina	0%	4 h	0,38 g*	mar 24/10/06
109		clavetto collettore acque nere	0%	4 h	0,25 g*	mar 24/10/06
110		preparazione tubi antiscivolo	0%	3 h	0,13 g*	mar 24/10/06
111		serbatoio naffa	0%	20 h	0,19 g*	mar 24/10/06
112		serbatoio acqua	0%	10 h	0,13 g*	mar 25/10/06
113		serbatoio acqua grigio e nero	0%	10 h	0,13 g*	mar 25/10/06
114	IMP.1	▣ MECCANICA FORATURE	8%	75 h	8,88 g*	lug 23/10/06





# nautica

www.nautica.it

Settimanale internazionale di navigazione

## SPECIALE PROVE

# BARCHE

ENTRATA E FURTOBORDO

30 nodi

Un motore a benzina a iniezione a T-jet

AVANT PREMIER - SALONS NAUTIQUES

# MULTICOQUES

CE QUE NOUS RÉVÉLENT LES CONSTRUCTEURS POUR 2010

ANNÉE SABBATIQUE

ROUTE DU RHUM : Le retour des géants

L'ESSAI

Navigation

# BARCHE

ENTRATA E FURTOBORDO

Vela MOTORE

ELAN 110

# BARCHE

IL MENSILE INTERNAZIONALE DELLA NAUTICA A MOTORE

Cover Predator 84 Sunseeker

Il Primitif G55 di LOUIS CAPIROSSI

# MOTOR BOAT

NEED FOR SPEED

70-KNO

MOVING YOUR BOAT ABOARD

# 30 NODI

"Santa Maria del mare"

CompassNavis

# nautica

international

TECHNIQUE OF SAILING

HISTORY AND EVOLUTION

ALLUMERUN

THE IDEAL BOAT

DOGS ON BOARD

NEW HULLS

WHERE TO GO

Sea Trials

Grand Soleil 46 - Benetti 470 - Ferretti Yacht 64 One Tonnes - Intrepid 320 CC

# OF & Open & Fly

Quando il design diventa arte

Gozzi da leggenda

Nuove tecnologie

I cartografici sbarcano sugli smartphone

Quando il design diventa arte

Resault, mobili, oggetti: tra classico e minimal style le nuove tendenze salgono a bordo

# RODRIQUEZ

YACHTING

Wake 66

Mano Marine

# nautica

SPECIALE SALONE

Le novità per il 2010

# neptune

YACHTING MOTEUR

Wake 46

Plan de pont genial et design décalant pour le premier yacht de chasseur-vitellus WYFFELT



# References



A Rodriguez Company

MEDITERRANEAN SHIPPING COMPANY



LINKED TO THE SEA





NavalDesign&Consulting s.r.l.

---

[www.navaldesign.net](http://www.navaldesign.net)


Via F. Fracanzano, 25 80127 Napoli, Italy

tel/fax: +39 081 5601347

fax: +39 02 93662764

mobile: +39 3389268307

[info@navaldesign.net](mailto:info@navaldesign.net)

 [www.facebook.com/navaldesign](http://www.facebook.com/navaldesign)